

MATHEMATICS

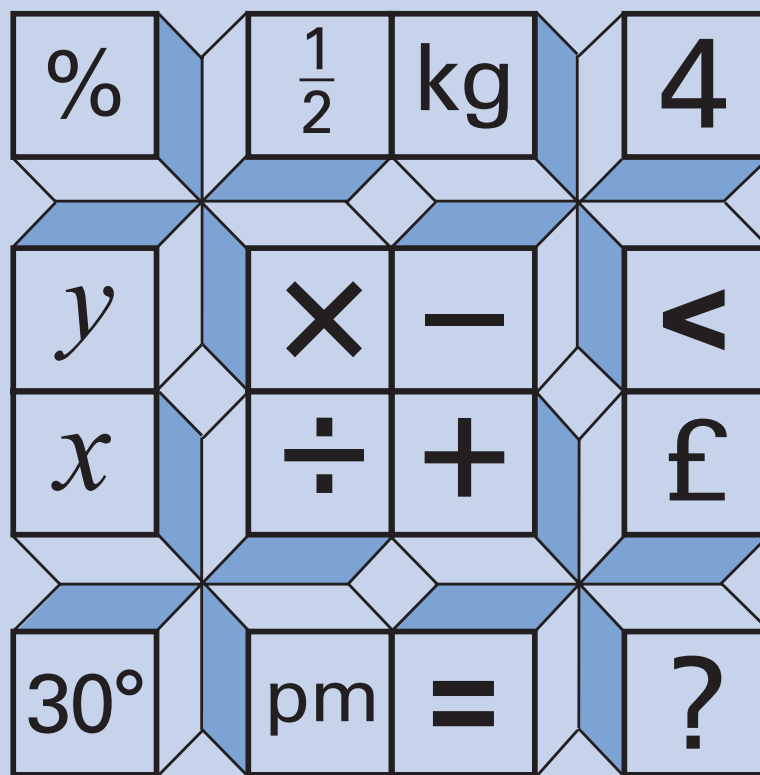
KEY STAGE 2 2000

TEST B

LEVELS
3-5

CALCULATOR ALLOWED

PAGE	MARKS
2	
4	
6	
8	
10	
12	
14	
15	
TOTAL	
BORDERLINE CHECK	



First Name

Last Name

School

Instructions

You **may** use a calculator to answer any questions in this test.

Work as quickly and as carefully as you can.

You have **45 minutes** for this test.

If you cannot do one of the questions, **go on to the next one**.
You can come back to it later, if you have time.

If you finish before the end, **go back and check your work**.

Follow the instructions for each question carefully.



This shows where you need to put the answer.

If you need to do working out, you can use any space on a page.

Some questions look like this:



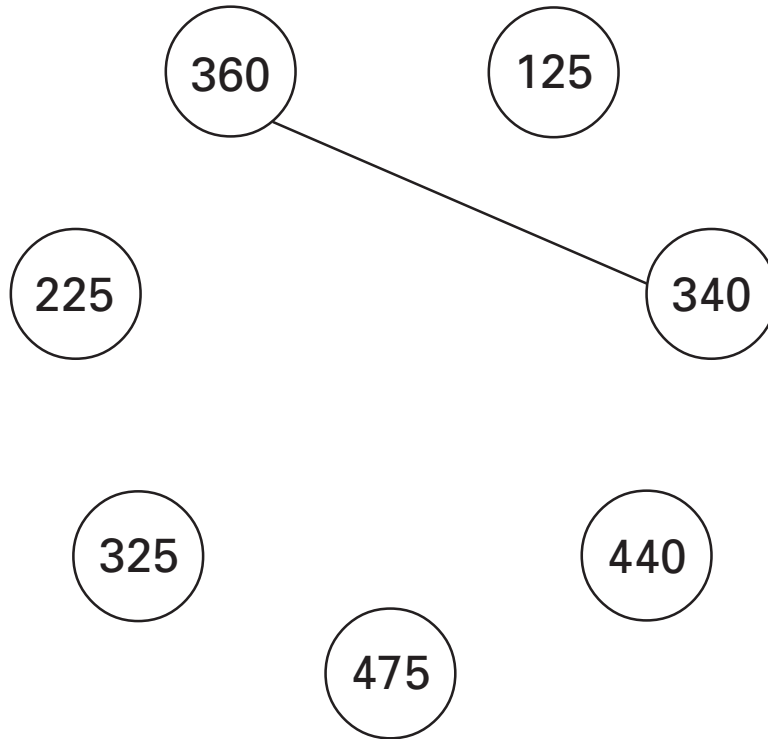
Show
your **method**.
You may get
a mark.

A diagram illustrating a question layout. It features a large rectangular box for working out. To the left of this box is a speech bubble containing the text 'Show your method. You may get a mark.' with an arrow pointing into the box. To the right of the large box is a smaller, empty rectangular box for the answer.

For these questions you may get a mark for showing your method.

1

Draw a line to join two other numbers which have a **total** of 700



1
1 mark

2

Circle the number which is nearest in value to 750



570

699

810

852

1050

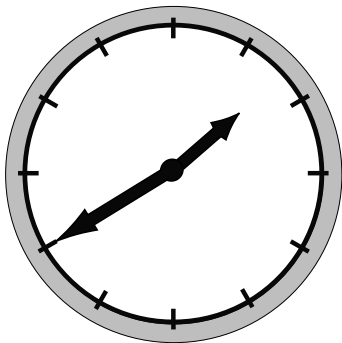
2

1 mark

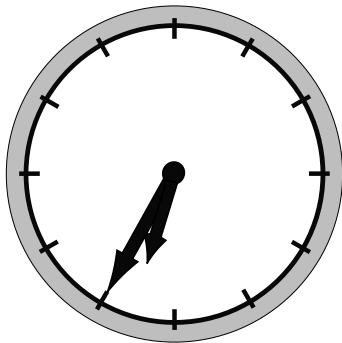
3

Here are three clock faces.

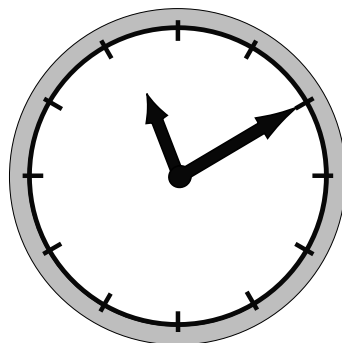
Match each clock face to the same time on a digital clock.



11:10



2:55



1:40

8:10

6:35

7:35

3a

1 mark

3b

1 mark

4

Write in the missing number.

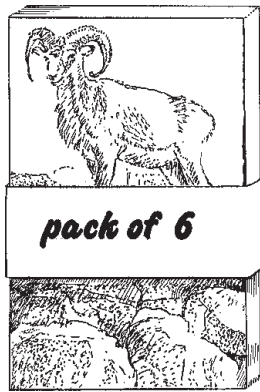


$$60 + 99 + \boxed{} = 340$$

4
1 mark

5

A shop sells postcards in **packs of 6** and **packs of 8**.



Alan bought **4 packs of 8 cards**.

How many cards did he get?



5a
1 mark

Shereen bought some **packs of 6 cards**.

Altogether she has **30 cards**.

How many **packs of 6** did she buy?

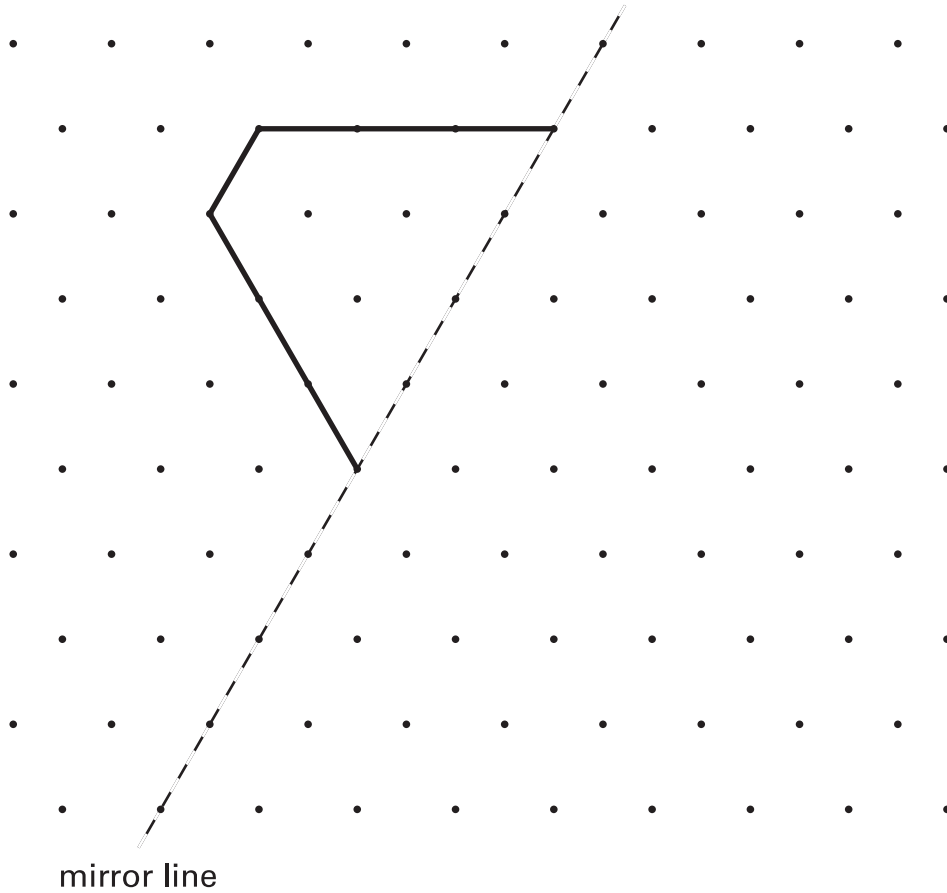


5b
1 mark

6Draw the **reflection** of the shape in the **mirror line**.

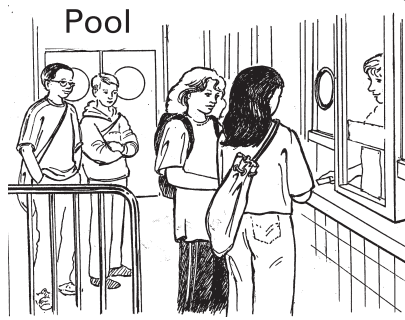
Use a ruler.

You may use a mirror or tracing paper.

6
1 mark**7**Write **two numbers**, each **greater than 100**, to complete this subtraction.

$$\boxed{} - \boxed{} = \boxed{2} \boxed{0} \boxed{8}$$

7
1 mark



These are the opening times at a swimming pool.

	opening times	
	am	pm
Monday	Pool closed	
Tuesday		
Wednesday	10:30	to 5:30
Thursday	10:30	to 8:30
Friday	10:30	to 9:00
Saturday	8:00	to 6:00
Sunday	7:00	to 4:00

How many **hours** is the pool open on a **Sunday**?

 **hours**

8a
1 mark

Which **day** has the **latest** closing time?



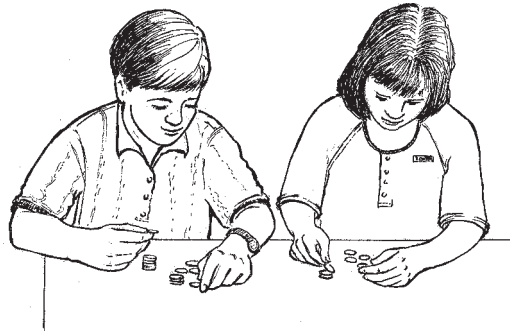
8b
1 mark

Habib arrives at the pool at **5:20pm** on **Saturday**.

How many **minutes** is it before the pool closes?

 **minutes**

8c
1 mark



Chris saves **50p** coins.

He has saved **45** of them.

How much money has Chris saved?





9a

1 mark

Michelle has saved **£8.40** in **20p** coins.

How many **20p coins** does Michelle have?



Show
your **method**.
You may get
a mark.



9b

2 marks

